



Note: This product is distributed on a 'try-before-you-buy' basis. All features described in this documentation are enabled. The unregistered version will insert a watermark on your PDF files.

About A-PDF Watermark Service

A-PDF Watermark Services is a windows services program which can run in the background to add watermarks to PDF files automatically. You can use the service to batch add text, image, graphic watermarks to existing Acrobat PDF files in sequence.

A-PDF Watermark Services can watch multiple folders at the same time every few seconds, and process files in those folders instantly after detecting changing, it can watermark files automatically when the files are written into the specified monitored folders.

Professional features included:

- Add watermark to PDF documents to protect your PDF files.
- Add different types of watermarks: text, image, PDF, shape and dynamic date time.
- Watch multiple folders at the same time.
- Run as Windows service to auto start after login your computer.

All these settings are stored in a profile setup, you can have as many profiles as you like.

A-PDF Watermark Services works with PDF documents and does NOT require Adobe Acrobat.



A-PDF Watermark Service

Stamp PDF files

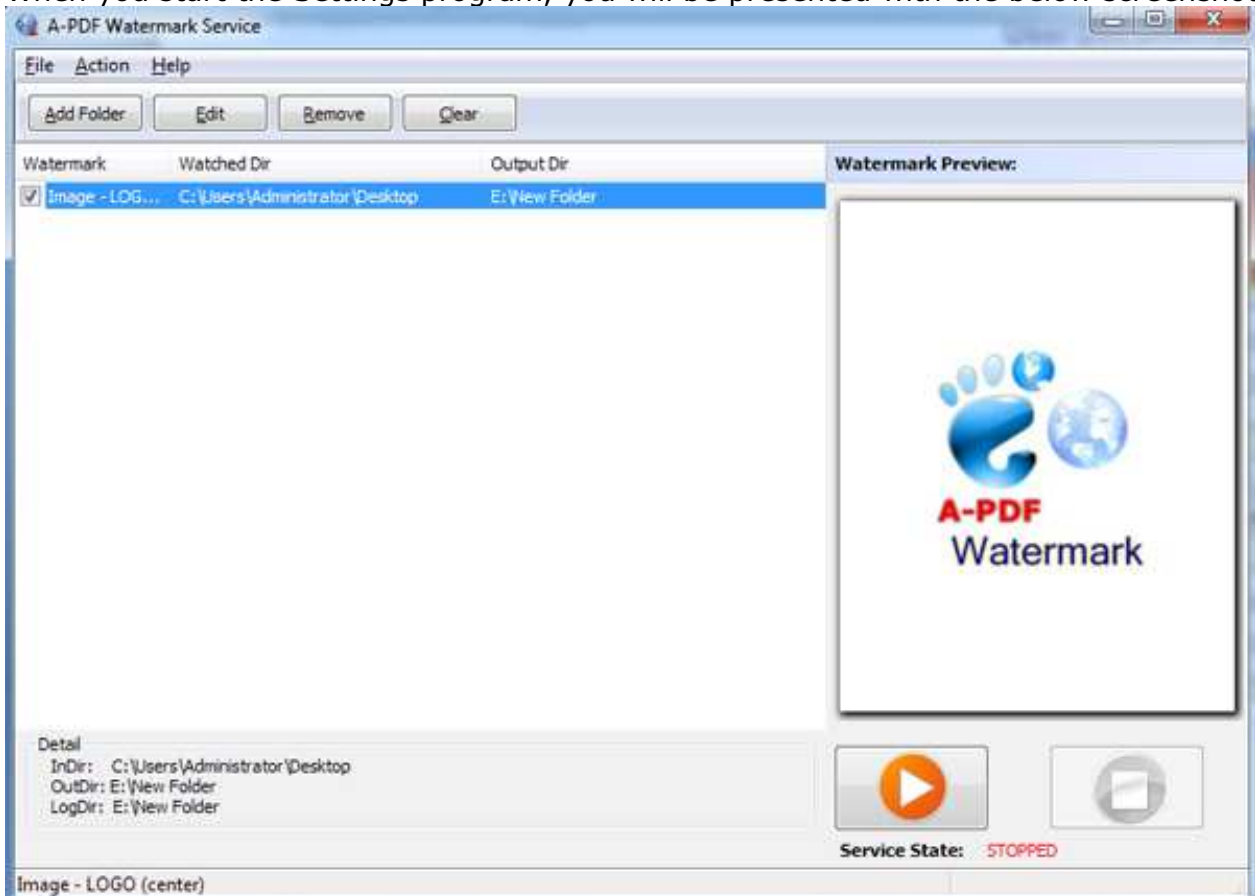
User Documentation

Using A-PDF Watermark Service

Ok presuming you've just installed A-PDF Watermark Services, you should have a icon on your desktop with the A-PDF Watermark Services Settings Logo:



When you start the Settings program, you will be presented with the below screenshot:

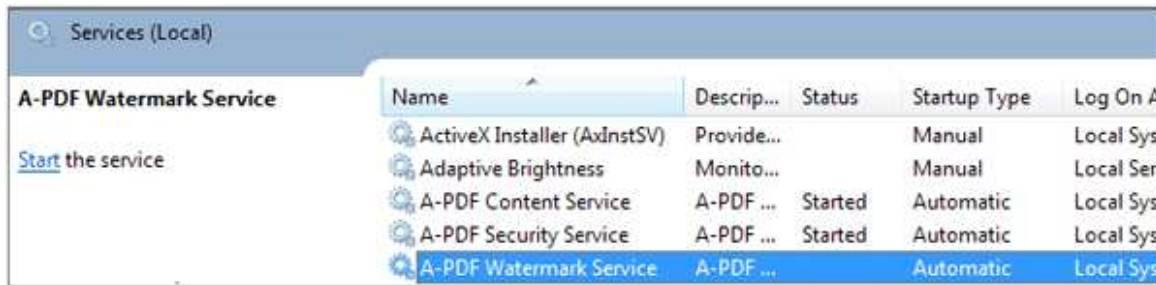


Start & Stop A-PDF Watermark Service

In the Settings program, you can click '**Start**' & '**Stop**', to start & stop A-PDF Watermark Service.



By default, the installed service will be started automatically when you reboot the computer. You can also start and shutdown the service from the **Control Panel** using the Services icon. When the service is started, it will create all the processes you defined in the settings one by one. When the service is shutdown, it will terminate each of the processes it created (in reverse order).



Setting the Hot Directory

- **Add Watched Folder**

Click icon , a hot directory setting window will be opened.

Hot Directory Setting

Monitored Directory: C:\Users\Administrator\Desktop

Include Sub-Directory

Output Directory: E:\New Folder

Log File Directory: E:\New Folder

Select Watermark:

Delete Source File

Move Source to:



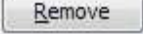
Hot Directory Setting:

- **Monitor Directory:** set the directory to monitor. Even **Include Sub-Directory**.
- **Output Directory:** set output directory where all of watermarked files will be sent to.
- **Log File Directory:** Log files will be saved as .log format, and all processing details will recorded in this kind of files, such as when to monitor, which file processed, if watermarking successfully or not.
- **Delete Source File:** Check this option to delete original PDF files after saving watermarked files in output folder.
- **Move Source to:** If you want to distinguish processed and unprocessed files, define a special folder to store processed files separately.

After setting the directories and watermark method of output files, click **OK** button to save settings, **cancel** button to quit without saving:

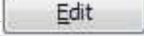


- **Remove Watched Folder**

If you want to remove a folder, select the folder and click . Make sure that A-PDF Watermark Service has finished processing all the files in the folder before you remove it.

Note: When you remove a watched folder, A-PDF Watermark Services does not delete the In and Out folders, their contents. You can delete these manually if needed.

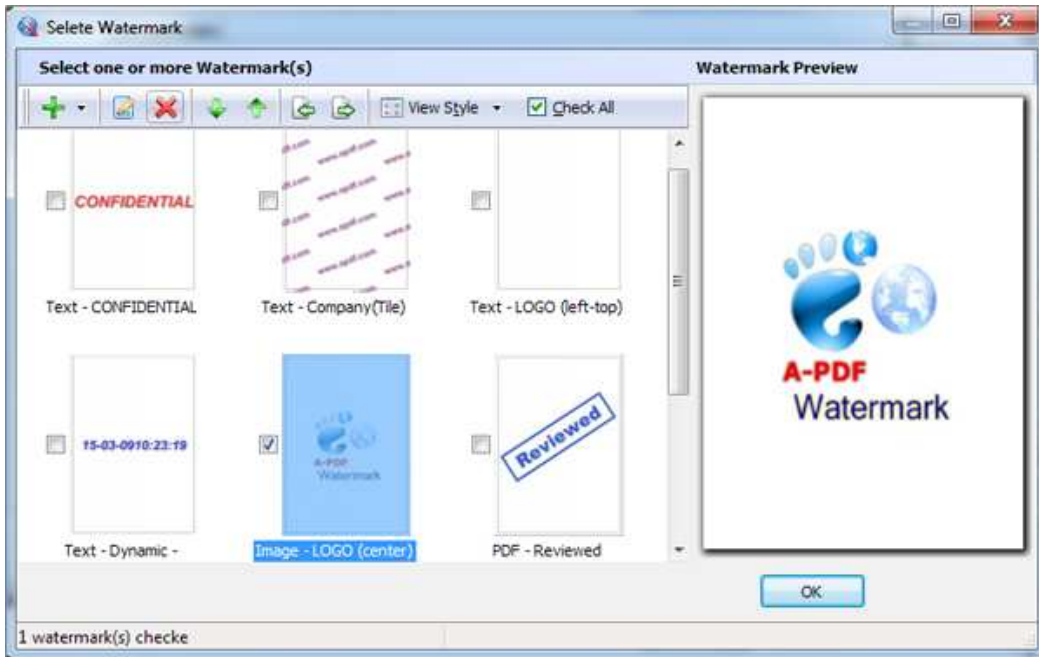
- **Edit Watched Folder or Watermark**

To change watched folder settings, select the folder and click . Set the folder options. More detail about Watermark settings please sees the section **Watermark Setting** below.



Watermark Setting

Click to enter into Watermark Setting interface as below shows:



You can add new watermarks, or edit default ones with provided tools:



Click "Export watermark" icon to save selected watermark as a watermark file locally. And you just need to click "Import watermark" icon when you want to use in future.

Click "View Style" to view watermarks in list or thumbnail viewer.

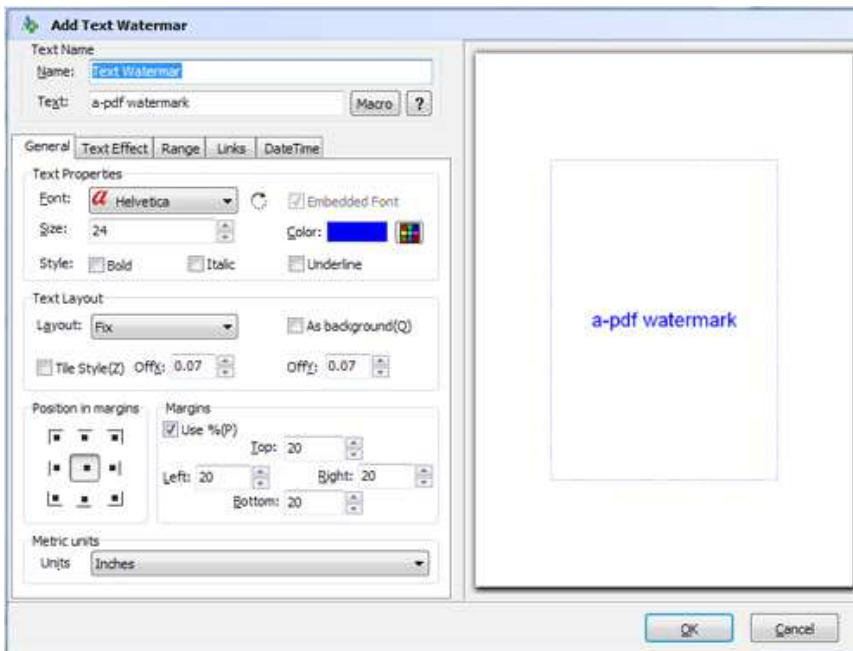
Click "Check All" to choose all listed watermark together.

You can preview the selected watermark in right side "Watermark Preview" box.

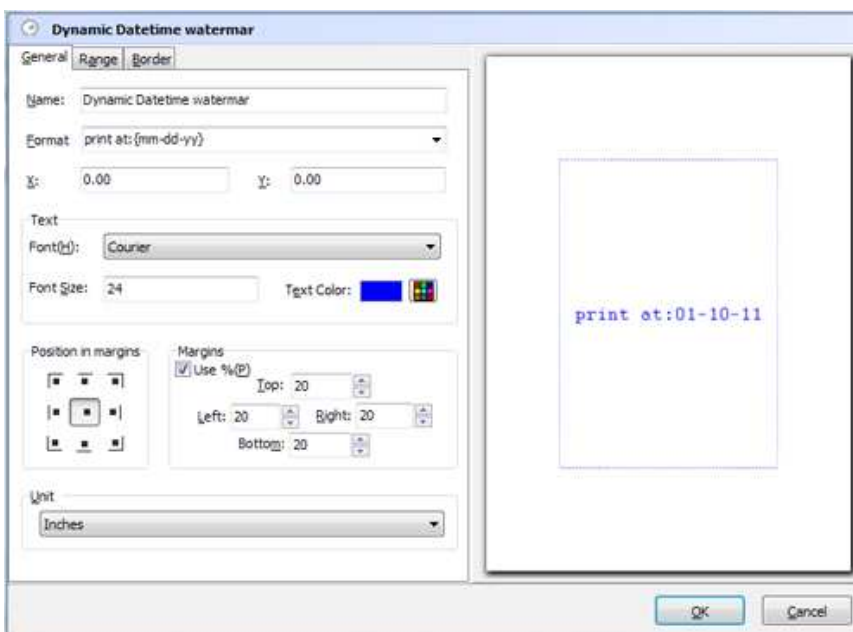


The watermark types you can add include:

- **Text Watermark:**

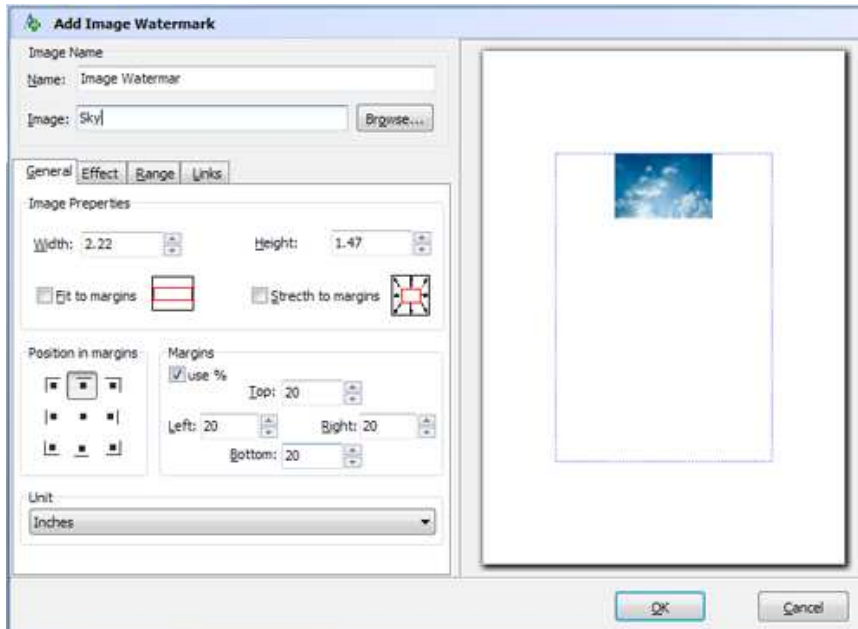


- **Dynamic Datetime Watermark:**

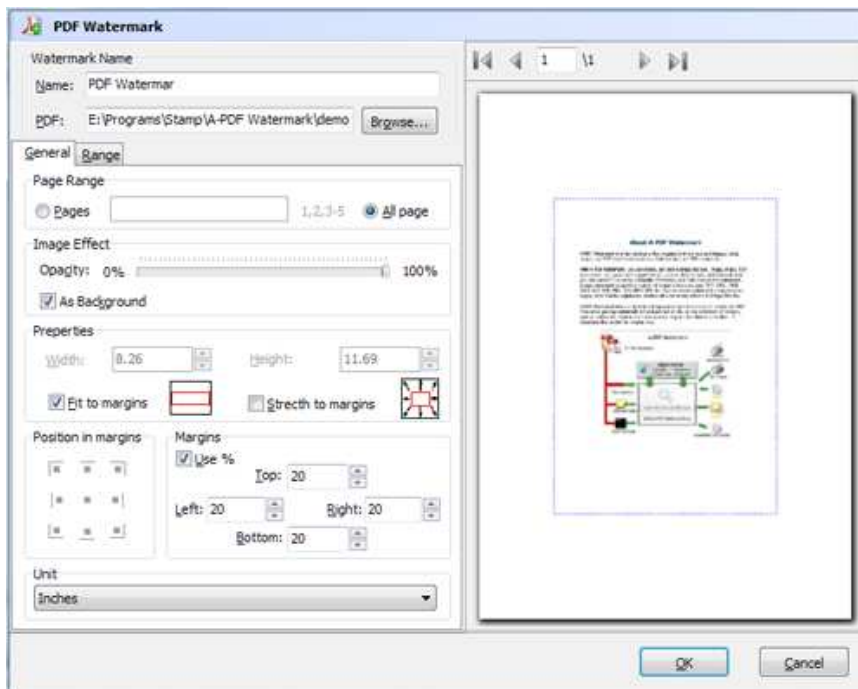




- **Image Watermark:**

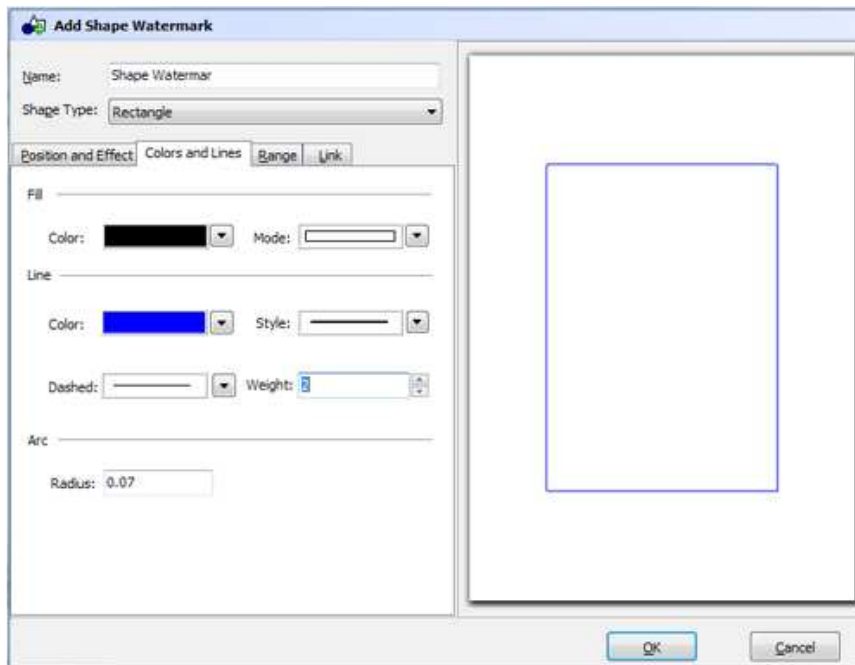


- **PDF Watermark:**

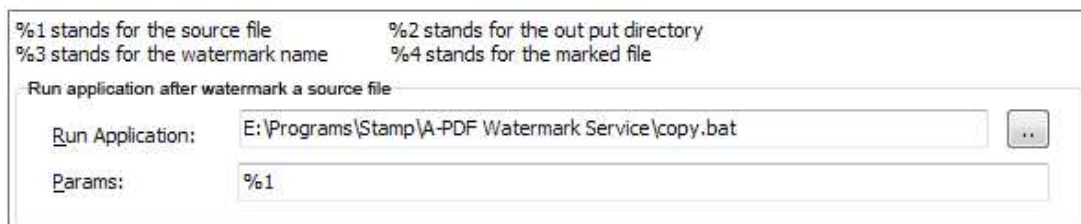




- **Shape Watermark:**



Application setting:



After setting watermarks, you can define Application here which to be started after watermarking each source PDF file. You can choose existing EXE application or use parameters to run your Bat command.

For more information: <http://www.a-pdf.com>